



Romano-British Pottery Kilns in the Warks/Leics/Northants Area

(Source: <http://potsherd.net/atlas/>)

Details of all Romano-British pottery kiln sites recorded up to the early 1980s are published in the microfiche gazetteers in the publication by V.G.Swan *The pottery kilns of Roman Britain* (HMSO, London, 1984, Royal Commission on Historical Monuments: Supplementary Series 5).

The database available on the <http://potsherd.net/atlas/> site is a summary of the gazetteer and includes information on the location and chronology of the kilns, and the principal wares and forms of pottery produced. Where appropriate, there are links back to the main Atlas page describing the ware.

A complete transcription of the gazetteer compiled by V.G.Swan is currently [2011] being compiled from the microfiches, and a preliminary release of the data, with a bibliography and map, is available through http://mapdata.thehumanjourney.net/vgswandb_index.html

The data in this Internet database would appear to imply that the Rugby area was principally served by the Nene Valley group of kilns, though these may possibly have been supplemented by imports from the kilns in the Mancetter area and the Leicester area (see Fig. 1), in addition of course to possible local home-made wares.

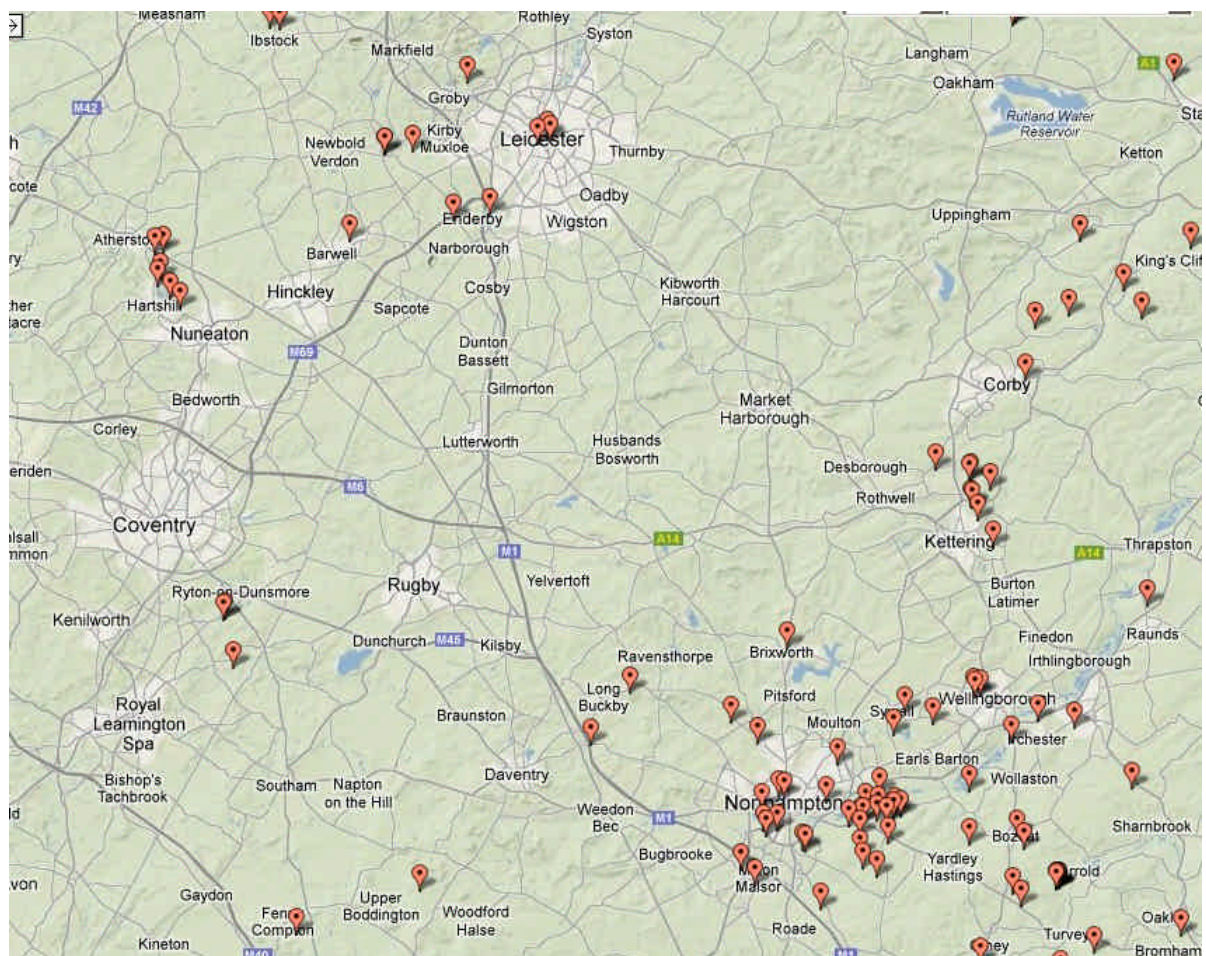


Fig.1: Overview of RB kilns in the Rugby-Northampton-Leicester area

More detailed maps for the Mancetter and Nene Valley areas are shown in Figs. 2 and 3 overleaf.

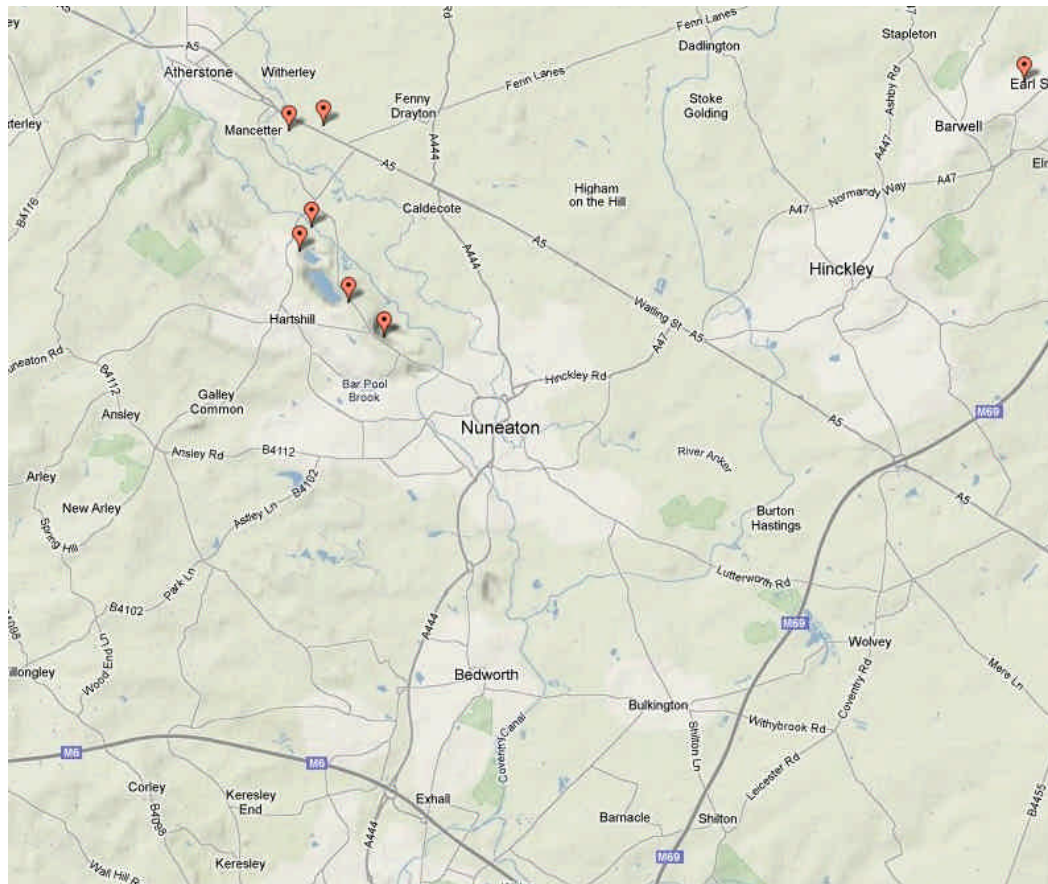


Fig. 2: Detail of the Mancetter/Hartshill area kilns

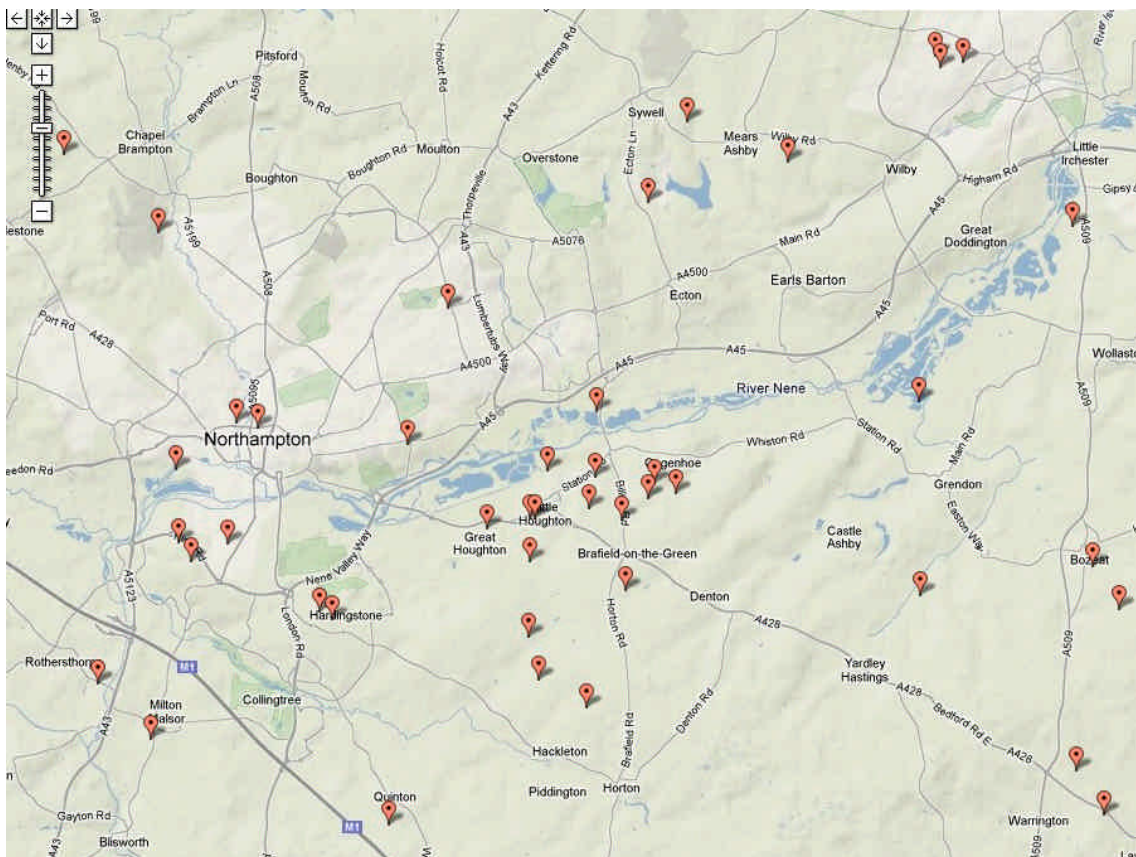


Fig. 3: Detail of the Nene Valley area kilns